

### TOPPING

**Topping mortars are used either as a leveling solution to make the floors smooth and level but also as the final layer with the addition of pigments. Without a proper reinforcement the cement based layer develops ugly cracks due to plastic / drying shrinkage stresses or due to the micro deformation of the support.**

**Cem-FIL® fibers have been developed for this purpose, allowing the safe use of self leveling mortars even on top of timber floors.**

### APPLICATION

- TOP SCREED
- SELF LEVELING MORTARS
- COLORED SCREED

### BENEFITS

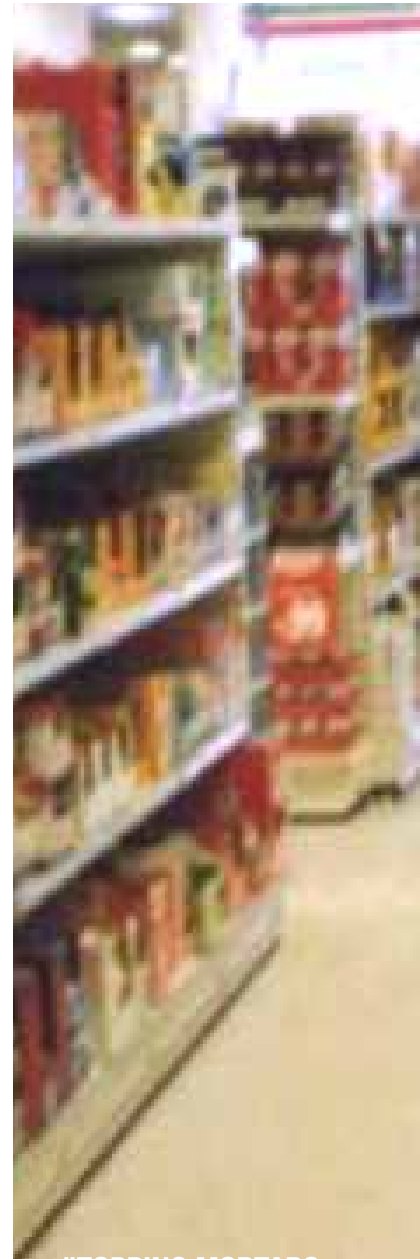
- Reduces shrinkage cracking
- Allows the mortar to be used above micro deformable supports such as timber floors (provides a significant increase in energy absorption, to resist stress from substrate movement)
- Increased compressive and bending strength.
- Easy and fast mixing. Fibers will not create clusters
- High abrasion resistance (office chair proved, according EN 12 529)
- Fibers are not visible on the surface even after grinding
- The mortar is still easily pumpable

### PROCESSING - DOSAGE

Cem-FIL® 62 fibers are typically added at 1% by weight and are available in 6, 12 and 18 mm length.

In most cases Cem-FIL® fibers should be added at the plant, as part of the dry mix mortar:

It is also possible to add the fibers on site, after the mortar has been prepared and mixed with water (e.g. 250 g of Cem-FIL® 62 fibers to one 25 kg dry bag)



**"TOPPING MORTARS ARE USED EITHER AS LEVELING SOLUTIONS FOR FLOORS OR AS A FINAL PIGMENTED LAYER"**

## PACKAGING

Cem-FIL® 62 chopped strands are packed in individual plastic bags and contained in carton boxes.

We can accommodate special requests. Please contact us.

## QUALITY STANDARDS - CERTIFICATION

- Cem-FIL® fibers are manufactured under a quality Management System approved to ISO 9001 . Additionally, the actual performance of Cem-FIL® fibers is subject to independent assessment and approval in Germany (Zulassung N° Z-3.72.1731).
- Cem-FIL® fibers meet safety standards according to European Directive 99/45/EC, 67/548/EEC and their latest amendment.

---

DELIVERING SOLUTIONS - TRANSFORMING MARKETS - ENHANCING LIVES

---

### Cem-FIL® Customer Service

Alcala de Henares, Spain  
 Tel. : + 34.91 885 58 03  
 Fax : + 34.91 885 58 34  
[Cem-fil@owenscorning.com](mailto:Cem-fil@owenscorning.com)

[WWW.CEM-FIL.COM](http://WWW.CEM-FIL.COM)

---



**OWENS CORNING  
 COMPOSITE MATERIALS, LLC**  
 ONE OWENS CORNING PARKWAY  
 TOLEDO, OHIO 43659  
 1.800.GET.PINK™  
[www.owenscorning.com](http://www.owenscorning.com)  
[www.ocvreinforcements.com](http://www.ocvreinforcements.com)

**EUROPEAN OWENS CORNING  
 FIBERGLAS, SPRL.**  
 166, CHAUSSÉE DE LA HULPE  
 B-1170 BRUSSELS  
 BELGIUM  
 +32.2.674.82.11

**OWENS CORNING – OCV ASIA PACIFIC**  
 SHANGHAI REGIONAL HEADQUARTERS.  
 2F OLIVE LVO. MANSION  
 620 HUA SHAN ROAD  
 SHANGHAI 200040  
 CHINA  
 86.21.62489922

The information and data contained herein is offered solely as a guide in the selection of a reinforcement. The information contained in this publication is based on actual laboratory data and field test experience. We believe this information to be reliable, but do not guarantee its applicability to the user's process or assume any responsibility or liability arising out of its use or performance. The user agrees to be responsible for thoroughly testing any application to determine its suitability before committing to production.

It is important for the user to determine the properties of its own commercial compounds when using this or any other reinforcement. Because of numerous factors affecting results, we make no warranty of any kind, express or implied, including those of merchantability and fitness for a particular purpose. Statements in this publication shall not be construed as representations or warranties or as inducements to infringe any patent or violate any law safety code or insurance regulation.

Pub. No. 10011806-D. Owens Corning reserves the right to modify this document without prior notice. ©2010 Owens Corning

Topping\_CemFIL\_ww\_12-2010\_Rev6\_EN