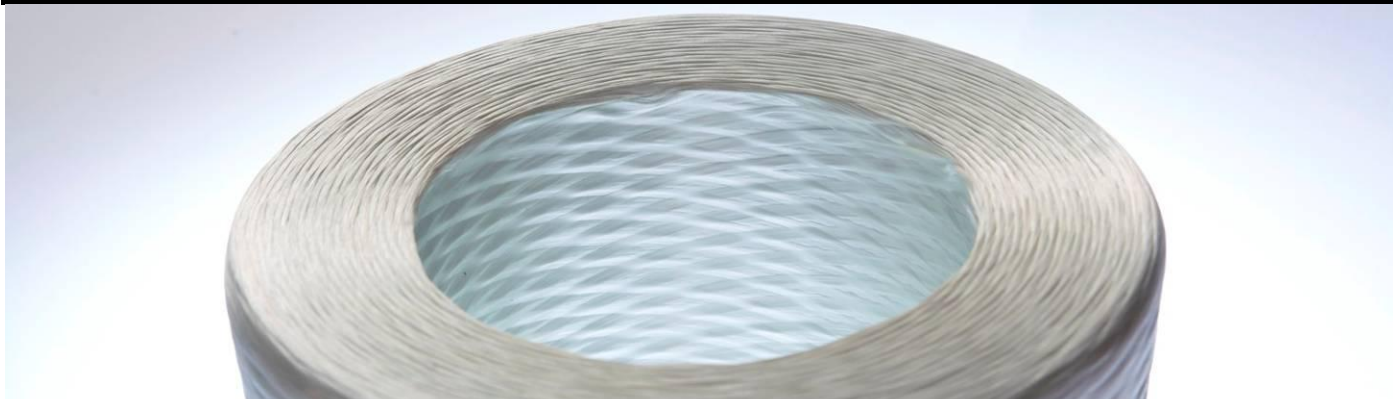


PERFORMAX® SE4850 TYPE 30® ROVING FOR PP

DIRECT LONG FIBER THERMOPLASTIC (DLFT) APPLICATIONS

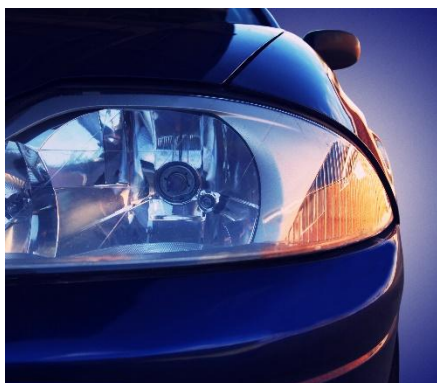


DESCRIPTION

- Owens Corning Performax® SE4850 Roving is designed for superior composite properties, processing and handling in polypropylene DLFT
- Produced using Advantex® corrosion resistant glass fiber

BENEFITS

- Outstanding processing, excellent wet-out/dispersion and low fuzz generation
- Superior Splice Tensile Strength for improved package to package transfer efficiency
- Optimized adhesion to PP to meet or exceed all mechanical performance needs



APPLICATIONS

SE4850 Single-End Roving is designed to be pulled from the inside of the package, in an upright position. The product is suitable for Polypropylene in Direct LFT process (D-LFT) where the glass strand is fed directly into the compounding extruder.

Performax® SE4850 Roving benefits design concepts where there is a need to enhance part consolidation and reduce weight.

SE4850 is a durable and corrosion-resistant solution for many complex structural and semi-structural parts.



PERFORMAX® SE4850 TYPE 30® ROVING FOR PP

DIRECT LONG FIBER THERMOPLASTIC (DLFT) APPLICATIONS

TECHNICAL CHARACTERISTICS (Single-End Roving)

Nominal filament diameter	Linear weight of roving TEX (yield)	Loss on ignition	Moisture
17 µm – 24 µm	2400 (207), 4418 (112), 4819 (103)	0.40%	0.05%

PACKAGING

Different packaging options are available in each region. Rovings are available in a single-end internal-pull package. Pallets are stretch wrapped for load stability. Each doff is wrapped for protection and to aid strand run out and transfer. Pallets are available in bulk or Creel-Pak® pallet packaging format, depending on region. More information is available from Owens Corning Customer Service and Sales.

STORAGE

Glass fiber products should be stored in a dry area, with ambient temperature, optimally, from 8-26°C and relative humidity 70% or less. The glass fiber products must remain in their original packaging material until the point of usage; the product should be stored in the workshop, within its original packaging, 48 hours prior to its utilization, to allow it to reach the workshop temperature condition and prevent condensation, especially when external temperatures are low. The packaging is not waterproof. Be sure to protect the product from the weather and other sources of water. When stored properly, there is no known shelf life to the product, but retesting is advised after three years from the initial production date to insure optimum performance.

REGULATORY

MSDS and SUIS documents are available upon request and will be provided with the first order.

Americas

Owens Corning
Composite Materials, LLC.
One Owens Corning Parkway
Toledo
Ohio 43659
1.800.GET.PINK™

Europe

European Owens Corning
Fiberglas Sprl.
166 Chaussée de la Hulpe
B-1170 Brussels
Belgium
+32 2 674 8211

Asia Pacific

Owens Corning - OC Asia Pacific
Shanghai Regional Headquarters
Unit 01, 02,05, 39/F,
Pudong Kerry Parkside,
1155 Fang Dian Road, Pudong,
Shanghai,
201204, China
+86-21-6101 9666

This information and data contained herein is offered solely as a guide in the selection of reinforcement. The information contained in this publication is based on actual laboratory data and field test experience. We believe this information to be reliable, but do not guarantee its applicability to the user's process or assume any responsibility or liability arising out of its use or performance. The user agrees to be responsible for thoroughly testing any application to determine its suitability before committing to production. It is important for the user to determine the properties of its own commercial compounds when using this or any other reinforcement. Because of numerous factors affecting results, we make no warranty of any kind, express or implied, including those of merchantability and fitness for a particular purpose. Statements in this publication shall not be construed as representations or warranties or as inducements to infringe any patent or violate any law safety code or insurance regulation. Owens Corning reserves the right to modify this document without prior notice.

© 2015 Owens Corning. All Rights Reserved. Car picture copyright: GeorgeMPPhotography / shutterstock.com.

Pub number: 10019413
SE4850_Type30_ww_02-2015_Rev1_EN_product sheet
February 2015

RTP_CS@owenscorning.com
composites.owenscorning.com